



# City of Atlanta Homeland Security

Atlanta's Response to Terrorism

Jim Cook, CEM

Homeland Security Director

# Today's Agenda

- Overview of National Strategy
- The Atlanta Strategy
- Questions

**Homeland security is a concerted national effort to prevent terrorist attacks within the United States, reduce America's vulnerability to terrorism, and minimize the damage and recover from attacks that do occur.**



# Atlanta's Homeland Security

The Homeland Security mission within the City of Atlanta is to develop and coordinate the implementation of a comprehensive strategy to prevent, when possible, prepare for, respond to and recover from terrorist threats or attacks. The Homeland Security Director will coordinate the executive branch's efforts in the City of Atlanta

*Mayor Shirley Franklin, May 2002*

# The Terminal Philosophy

**It can't happen here.**

**It can't happen to me.**





# Terrorism

The FBI defines terrorism as the “unlawful use of force or violence against persons or property to intimidate or coerce a government, the civilian population, or any segment thereof, in furtherance of political or social objectives.”

# Why Terrorism?

- Terrorism Works
- Terrorism is Easy



# Media

**Terrorism is  
first, last, and  
always a  
media event.**

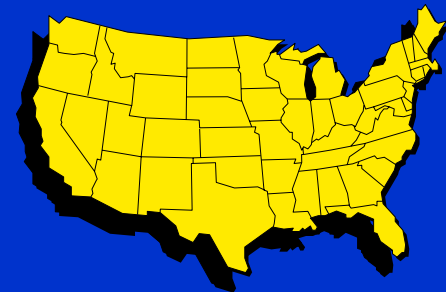


# TERRORISM

**INTERNATIONAL**



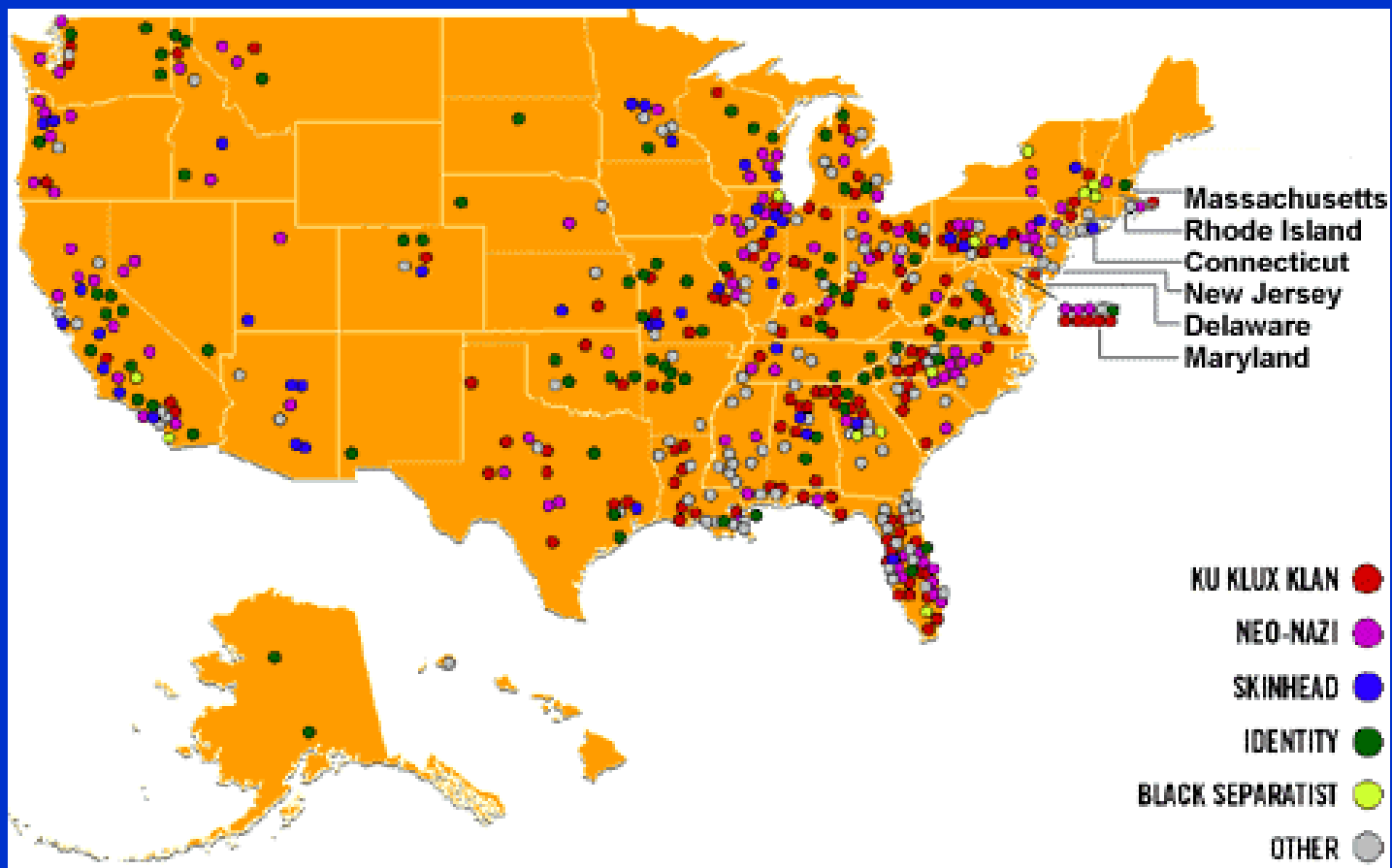
**DOMESTIC**



# Domestic – Right Wing Groups

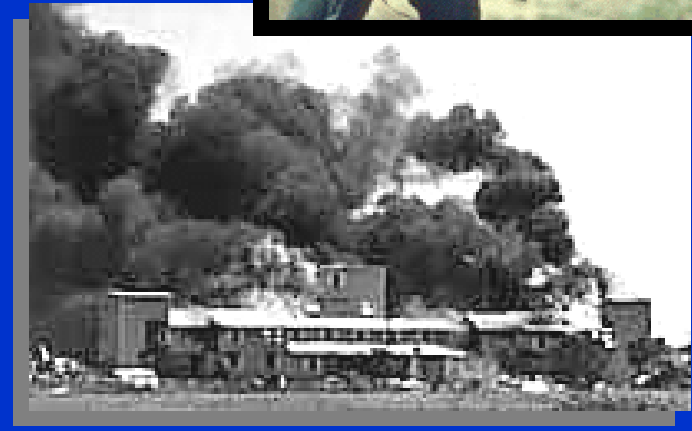
- Aryan Nations
- Army of Israel
- KKK factions
- Viper Militia
- Phinieas Priesthood
- Republic of Texas
- Army of God
- Freemen
- The Order
- Skin factions

# Groups in the U.S.



# Group Types

- ACTIVIST
- RITUALIST
- SURVIVALIST
- RETREATIST
- VIOLENT EXTREMIST



# International Groups

- Abu Nidal Organization
- Abu Syyaf Group
- Armed Islamic Group
- Aum Supreme Truth
- Hamas
- Harakat ul-Mujahidin
- Hizballah
- Al-Jihad
- Kurdistan Worker's Party
- Islamic Jihad
- Palestine Liberation Front
- Al-Qaida

# Threat Types

- Weapons of Mass Destruction
- Information Warfare
- Conventional Weapons



President Bush at Georgia Tech

# Near-Term Threats

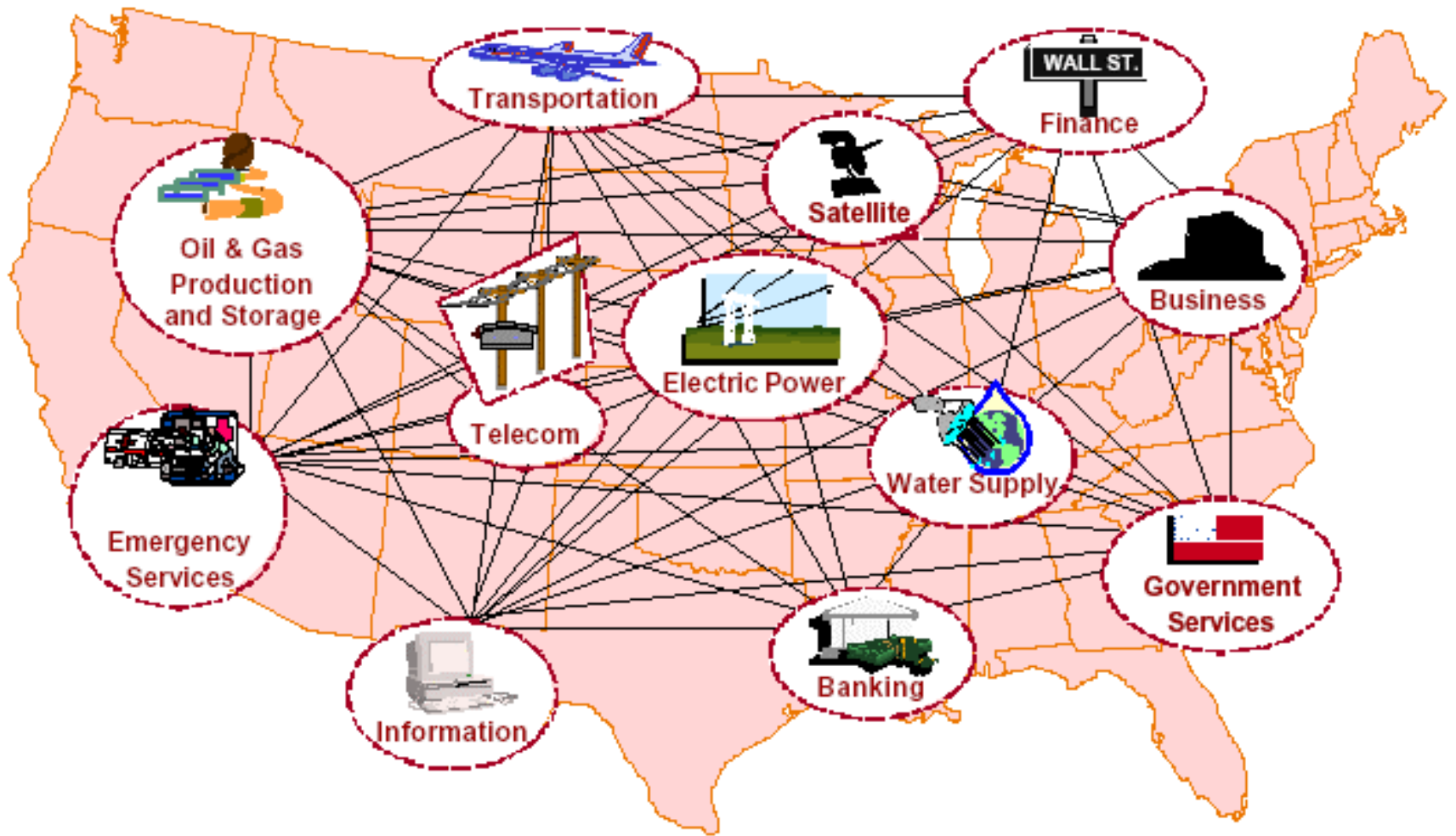
## Logical Primary Targets

- High Symbolic Value / High Fatalities / High Economic Impact
  - Commercial Aviation
  - Public Transportation
  - Critical Physical and Electronic Infrastructure
  - Military Headquarters
  - Diplomatic Facilities
  - Corporate Symbols

# A New World Has Emerged

What does the future hold?

Coordinated multi-dimensional attacks (conventional, biological, radiological, cyber) calculated to achieve **cascading effects** that overload our capacity to respond



# Atlanta's Strategy

- Detection
- Protection
- Preparedness
- Incident Management
- Recovery
- Public Health and Bio-Terrorism

# Atlanta's Strategy - Detection

- Work with the FBI's Joint Terrorism Task Force
- Developed:
  - A protocol for the gathering and sharing of sensitive information
  - An information dissemination process for the general public, emergency response units, the media, and critical asset holders

# Detection

## Atlanta Police Department

- Work with local, state and federal law enforcement agencies
- Overlay counter-terrorism efforts with existing undercover counter-drug efforts

## Hospitals, Health Department and Medical Examiner

- Develop surveillance system for rapid detection and identification.

# Atlanta's Strategy - Protection

## Critical Asset Identification

- 1000 assets of local concern
  - Highly critical with various vulnerabilities
    - Communication, energy and water, military, government, transportation, tourism, cyber
- Protective Security Matrix
  - Keyed to the Homeland Security Advisory System



# Protection

- Continuity of government
- Bio-Terrorism training for public safety officials and health professionals

# Preparedness

## Policy Considerations

- Bio-Terrorism
  - Authority/Policy/Procedures
    - Quarantine
    - Containment
    - Isolation
    - Mandatory vaccinations
    - Civil liberties



# Preparedness

## Local Capacity Building

- Comprehensive needs assessment for First Responder & EMS equipment, training, and exercises
- Equipment improvements
- Emergency management system improvements



# Preparedness

## Training

- Hospitals and other health care facilities
  - Bio-terrorism emergency protocols for patient care, staffing, resource conversion, security, surge capacity, and alternative medical sites
  - Hospital Incident Command
- Medical/Health professionals
  - Health reporting and mass casualty response
- First Responders
  - Biological and chemical threats



# Preparedness

## Exercises

- Multi-year strategic exercise program
- Integrated multi-agency, multi-city/county
- Integrated with real-time field reporting
  - Biological release
  - Anthrax
  - National Pharmaceutical Stockpile
  - School terrorism
  - Homeland security advisory system
  - Coordinated multi-dimensional

# Atlanta's Strategy - Incident Management

- Mobile incident support
  - Personnel, equipment, real-time field reporting
- Mutual aid
- Resource management
- Communication interoperability

# Atlanta's Strategy - Recovery

- Mental Health Counseling and Intervention
- Economic



# FBI TEN MOST WANTED FUGITIVE

MURDER OF U.S. NATIONALS OUTSIDE THE UNITED STATES;  
CONSPIRACY TO MURDER U.S. NATIONALS OUTSIDE THE UNITED STATES;  
ATTACK ON A FEDERAL FACILITY RESULTING IN DEATH

## USAMA BIN LADEN



Date of Photograph Unknown

**Aliases:** Usama Bin Muhammad Bin Laden, Sheikh Usama Bin Laden, the Prince, the Emir, Abu Abdullah, Muftid Shaykh, Hajj, the Director

### DESCRIPTION

|                        |   |                     |               |
|------------------------|---|---------------------|---------------|
| <b>Date of Birth:</b>  | 1957  | <b>Hair:</b>        | Brown         |
| <b>Place of Birth:</b> | Saudi Arabia  | <b>Eyes:</b>        | Brown         |
| <b>Height:</b>         | 6' 4" to 6' 6"  | <b>Complexion:</b>  | Olive         |
| <b>Weight:</b>         | Approximately 160 pounds  | <b>Sex:</b>         | Male          |
| <b>Build:</b>          | Thin  | <b>Nationality:</b> | Saudi Arabian |
| <b>Occupation:</b>     | Unknown   |                     |               |
| <b>Remarks:</b>        | Bin Laden is the leader of a terrorist organization known as Al-Qaida, "The Base." He is left-handed and walks with a cane. |                     |               |

### CAUTION

CONSIDERED ARMED AND EXTREMELY DANGEROUS. BIN LADEN IS A SUSPECT IN OTHER TERRORIST ATTACKS THROUGHOUT THE WORLD.

CONSIDERED ARMED AND EXTREMELY DANGEROUS  
IF YOU HAVE ANY INFORMATION CONCERNING THIS PERSON, PLEASE CONTACT YOUR LOCAL FBI OFFICE OR THE NEAREST U.S. EMBASSY OR CONSULATE.

### REWARD

The Rewards For Justice Program, United States Department of State, is offering a reward of up to \$25 million for information leading directly to the apprehension or conviction of Usama Bin Laden. An additional \$2 million is being offered through a program developed and funded by the Airline Pilots Association and the Air Transport Association.

[www.fbi.gov](http://www.fbi.gov)

June 1999  
FBI/DOJ/ETA/IA/APA



# Follow-Up

Jim Cook, CEM

- Homeland Security Director
- Director, Atlanta-Fulton County Emergency Management Agency
  - Phone: 404-730-5600
  - FAX: 404-730-5600
  - [jim.cook@afcema.com](mailto:jim.cook@afcema.com)
  - [www.afcema.com](http://www.afcema.com)

