
AVIATION CONGESTION AND DELAY

Paul Aussendorf, Jonathan Carver,
and Maria Wallace

U.S. Government Accountability Office

March 19, 2008

Presentation

- What is aviation delay?
 - What are the sources of delay?
 - What is being done to reduce delays?
-

Delay

195	7:30	9:15A	A11	DELTA
2072	8:50	DELAYED	B10	LOS
756	8:55	DELAYED	C25	SALT
701	9:01	9:41A	C9	DENV
17	9:03	DELAYED	A8	SALT
727	9:09	ON TIME	C16	DALL

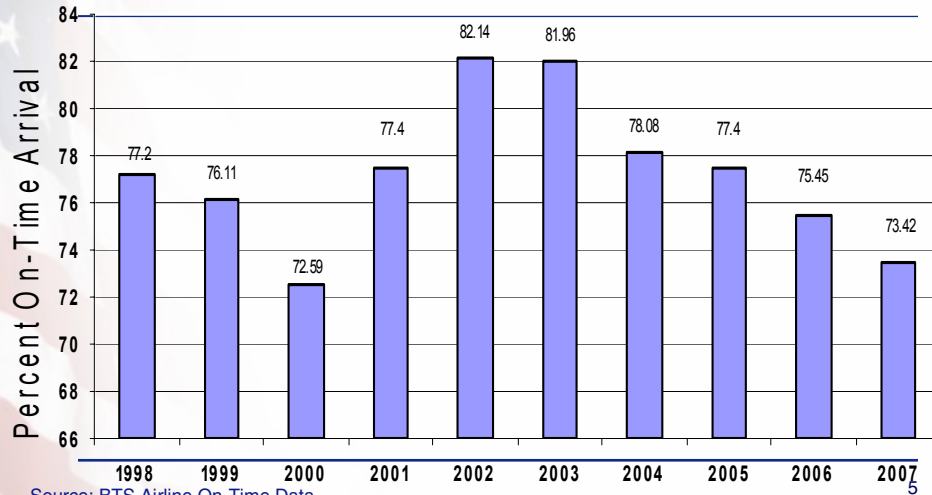
3

Delay Definition

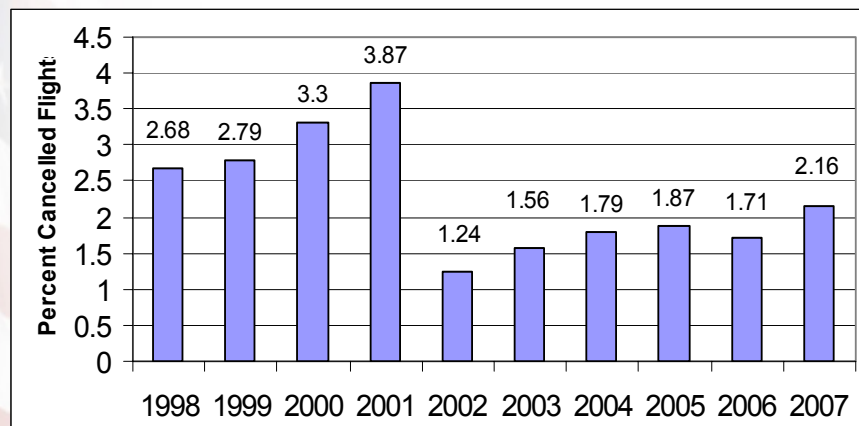
- How do we define delay?
 - DOT and FAA Measure Delay Differently
 - BTS measures airline reported delay
 - FAA measures Air Traffic Control performance
- Delays and cancellations increased in 2007
 - More than 1 in 4 flights arrived more than 15 minutes late
 - 540,000 flights delayed (10 percent increase)
 - 1,600 flights delayed more than 3 hours
 - 160,748 flights cancelled
 - Complaints to DOT increased to 13,000

4

Delay Airline On-Time Performance



Delay Flight Cancellations



Source: BTS Airline On-Time Data

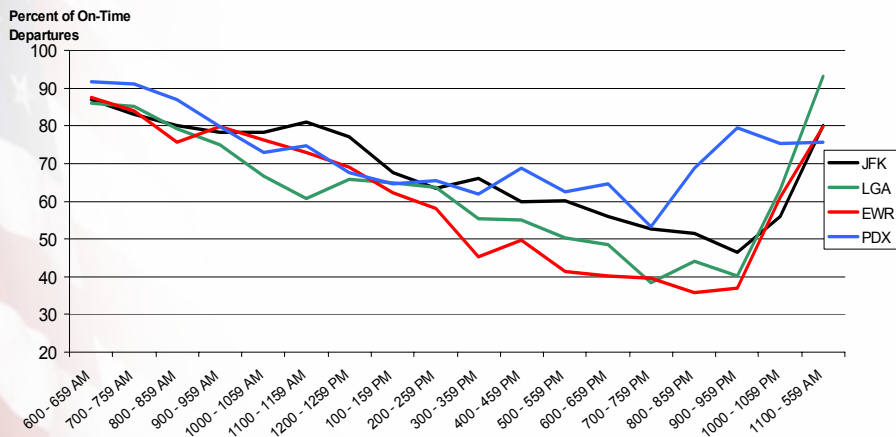
Delay Airports With Worst Delay

Lowest Ranked Major Airports		
	2007 On-Time Arrival Performance	%
1	New York, NY (LGA)	58.48
2	Newark, NJ (EWR)	59.45
3	New York, NY (JFK)	62.84
4	Chicago, IL (ORD)	65.88
5	Philadelphia, PA (PHL)	66.54
6	Boston, MA (BOS)	69.68
7	San Francisco, CA (SFO)	69.75
8	Miami, FL (MIA)	70.99
9	Charlotte, NC (CLT)	71.30
10	Seattle, WA (SEA)	71.43
	On-Time Arrival Average	73.03

Source: BTS Airline On-Time Data

7

Delay Airport On-Time Departure (Time of Day)



Source: USDOT, Air Travel Consumer Report 2007

8

Delay 2007 Airline On-Time Arrival

CARRIER	PERCENT OF ARRIVALS ON TIME
ALOHA AIRLINES	93.0
HAWAIIAN AIRLINES	92.0
US AIRWAYS	74.5
SOUTHWEST AIRLINES	72.5
DELTA AIR LINES	71.4
ALASKA AIRLINES	71.1
AIRTRAN AIRWAYS	67.2
CONTINENTAL AIRLINES	66.4
JETBLUE AIRWAYS	65.3
ATLANTIC SOUTHEAST AIRLINES	64.0
EXPRESSJET AIRLINES	63.7
SKYWEST AIRLINES	62.4
MESA AIRLINE	61.8
AMERICAN AIRLINES	58.7
NORTHWEST AIRLINES	57.4
FRONTIER AIRLINES	57.3
COMAIR	56.2
UNITED AIRLINES	54.8
PINNACLE AIRLINES	54.6
AMERICAN EAGLE AIRLINES	53.6
Average	64.3

Source: BTS Airline On-Time Data

9

Delay Examples of Chronically Delayed Flights

Carrier	Flight Number	Origin-Destination Airports	# of Operations Reported	% of Flight Operations Arriving 15 Min Late or More	Average # Minutes Late
ExpressJet Airlines	7758	LAX-SEA	15	100%	57
United Airlines	1298	LAX-DEN	15	93.33%	51
American Airlines	360	ORD-LGA	26	92.31%	71
American Airlines	1497	EWR-ORD	25	92%	84

Source: USDOT Air Travel Consumer Report December 2007

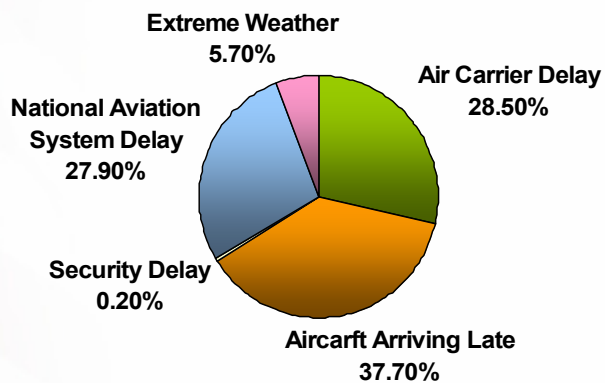
10

Sources of Delay



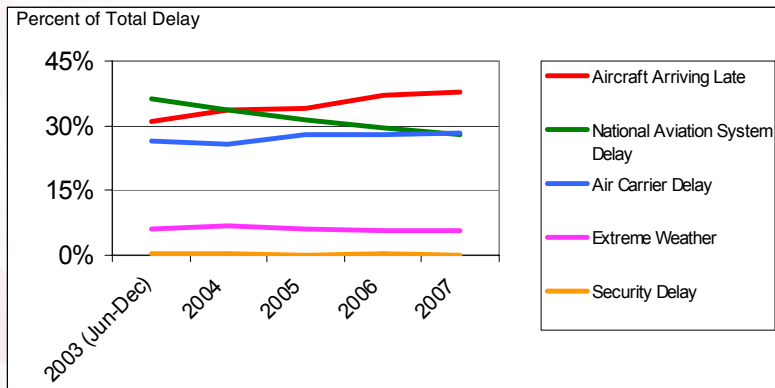
"Sorry to keep you folks waiting ... The flight was delayed."

Sources of Delay Delay and Cancellation (2007)



Source: BTS

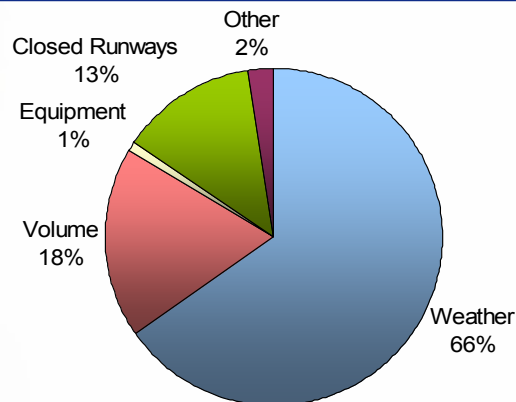
Sources of Delay Trends in Sources of Delay (2003-2007)



Source: BTS

13

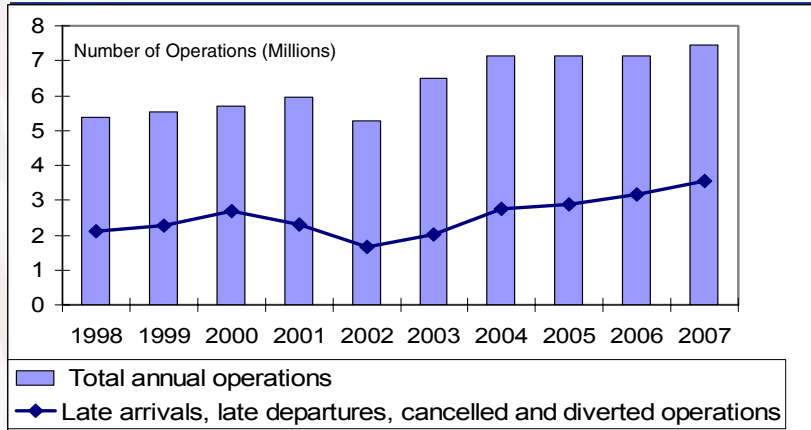
Sources of Delay National Aviation System Delays (2007)



Source: BTS

14

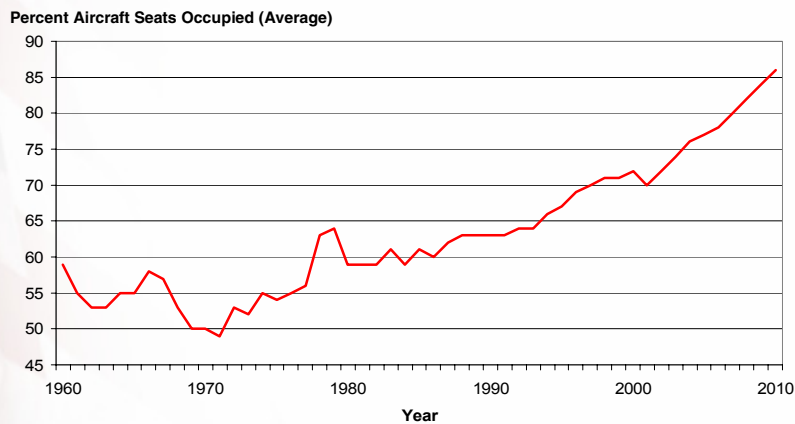
Sources of Delay Growth in Operations and Delays



Source: BTS

15

Sources of Delay Growth in Airline Load Factors



Source: Center For Air Transportation Systems Research, George Mason University

16

Delay Reduction Initiatives



17

Delay Reduction Initiatives Short-Term Initiatives

NY Initiatives

- Operational improvements in NY
- NY airspace czar
- Orders capping hourly operations at LGA, JFK, and EWR
- Redesign of NY/NJ/PHL airspace

Nationwide Initiatives

- Airport rates and charges policy
- Use of military airspace
- Tarmac delay task force
- Airspace Flow Programs

18

Delay Reduction Initiatives Longer-Term Initiatives

Air Traffic Control

- NextGen improvements
 - Satellite-based navigation
 - Est. cost \$25 Billion and 20 years

Market-based Solutions

- FAA Reauthorization
- Peak hour pricing

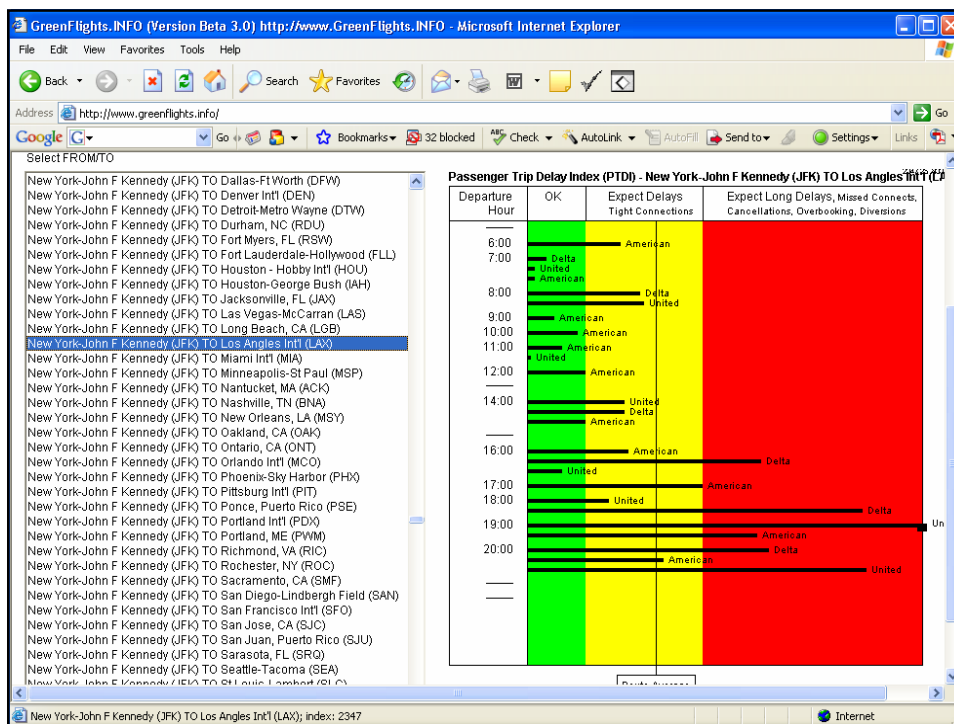
Airport Improvement Grants


- New runways at ORD, SEA, and IAD
-

Delay Reduction Initiatives What Can Consumers Do?

Consumer Information

- DOT's Office of Aviation Enforcement- Air Travel Consumer Report <http://airconsumer.ost.dot.gov/reports/index.htm>
 - Other consumer focused resources on flight delay
 - www.GreenFlights.info
 - www.Flightstats.com
 - www.insidetrip.com
-





Questions?

Paul Aussendorf aussendorfp@gao.gov 206-287-4807
 Maria Wallace wallaceme@gao.gov 206-287-4845
 Jonathan Carver carverj@gao.gov 206-287-4869

22